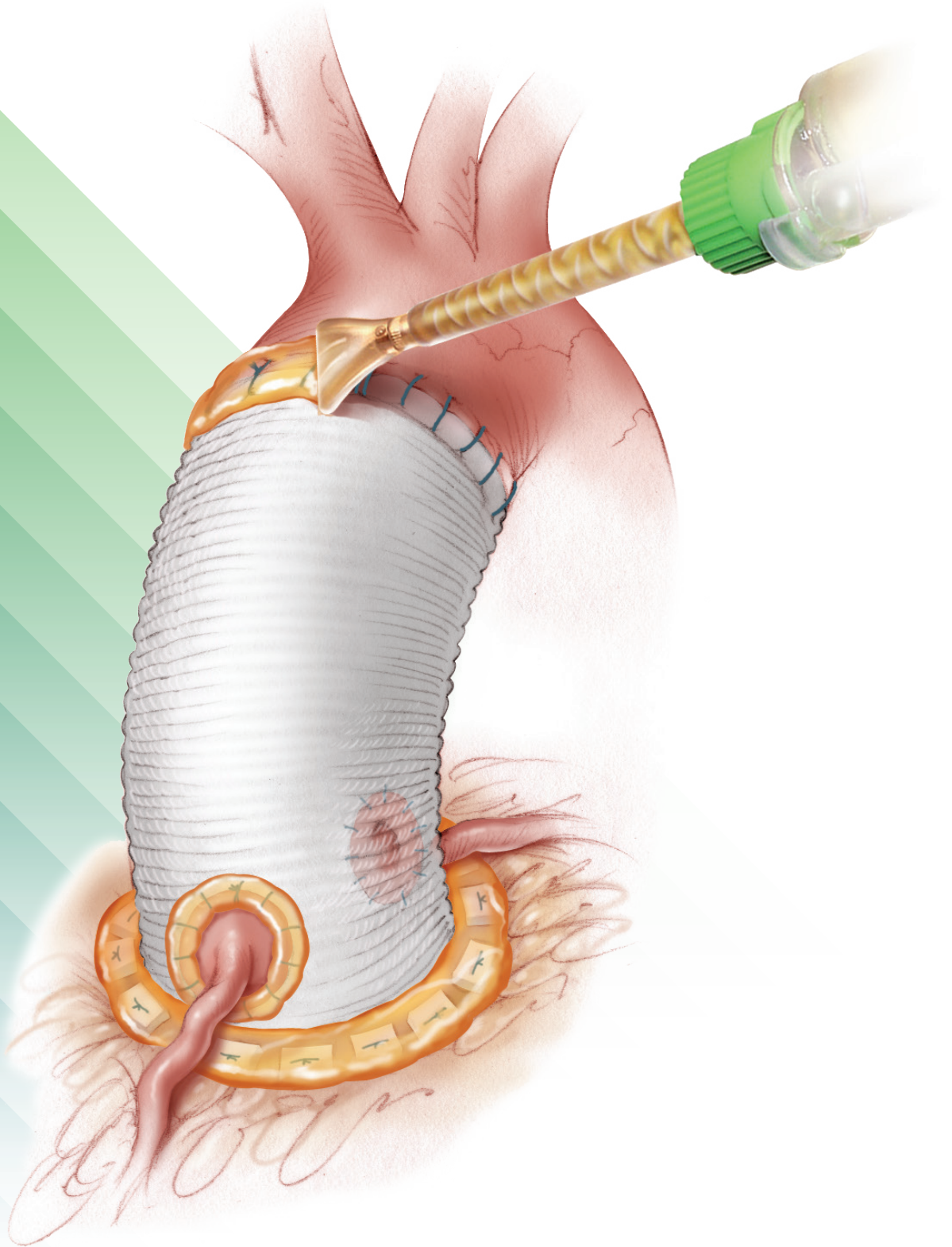


# Techniques In Cardiac Surgery



ARTIVION™

**BioGlue®**  
Surgical Adhesive

# Key Application Techniques<sup>3</sup>

---

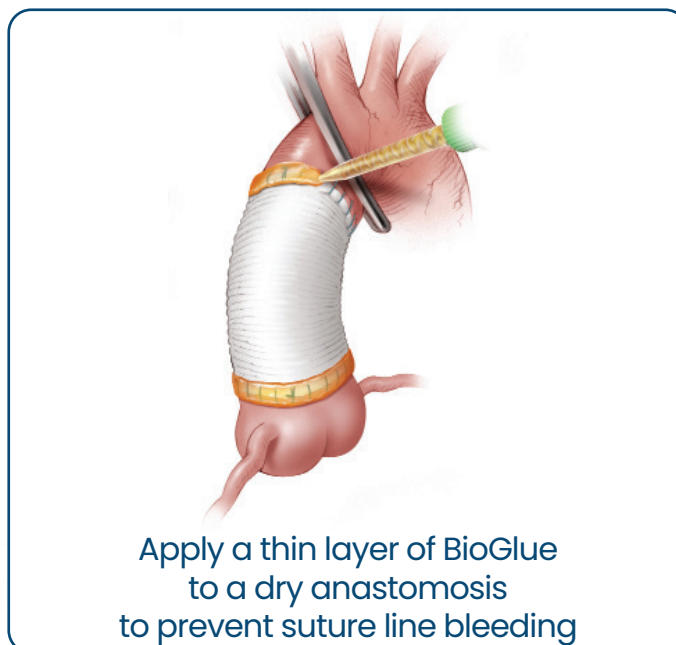
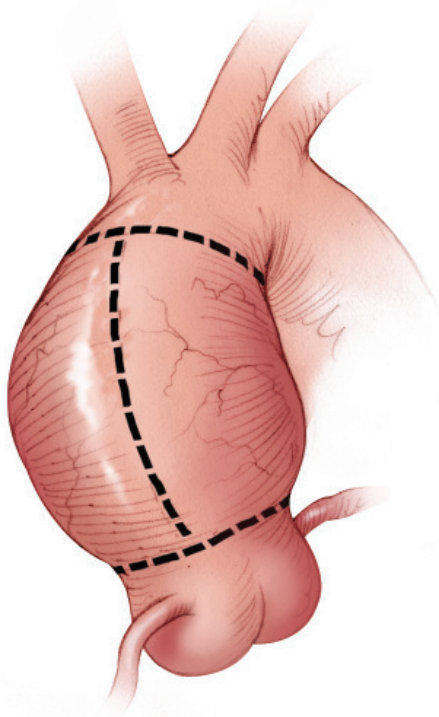
1. **De-Air** remove all air from the syringe.
2. **Dry** the target site (by suction and/or gauze).
  3. **Prime** the syringe.
  4. **Apply** a thin layer in a slow and steady manner.
  5. **Wait** 2 minutes for full strength.



BioGlue®

# Application Techniques in Cardiac

## Aortic Aneurysm<sup>1,2</sup>



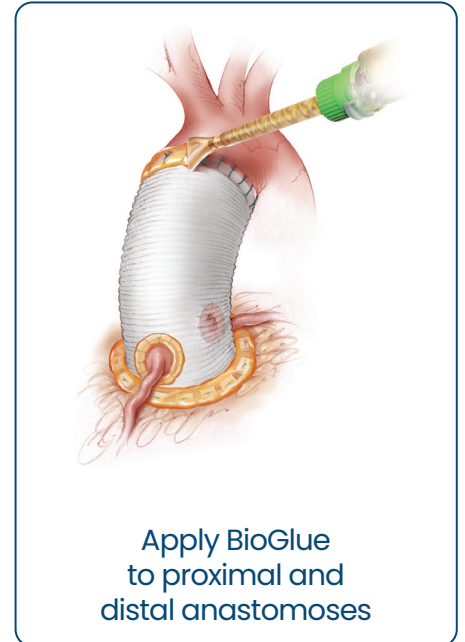
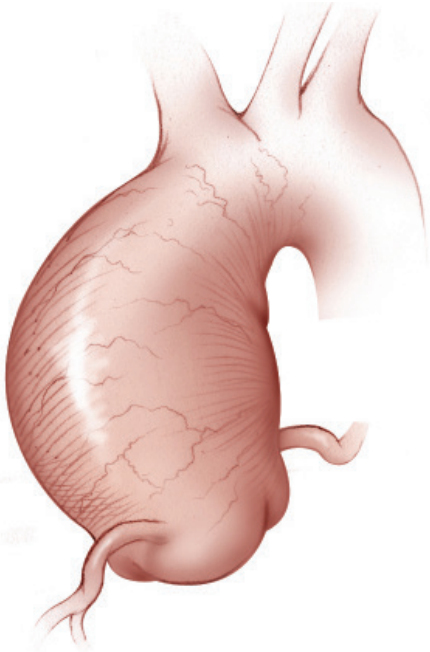
- Clamp and depressurize vessel prior to BioGlue application
- Dry the target site to ensure optimal adherence of BioGlue to the target tissue
- Prime the applicator tip and apply thin layer of BioGlue that extends 1 cm in either direction of the suture line
- Wait 2 minutes for BioGlue to completely polymerize before pressurizing the anastomosis
- Complete the final anastomosis, and again apply a thin layer of BioGlue to prevent suture line bleeding
- Wait 2 minutes before re-establishing systemic blood flow

Surgical technique is at the discretion of the surgeon. Variations in technique and practices will inevitably and appropriately occur when clinicians take into account the needs of the individual patient.

Since launch, BioGlue

# Surgery

## Aortic Valve Replacement<sup>1,2</sup>

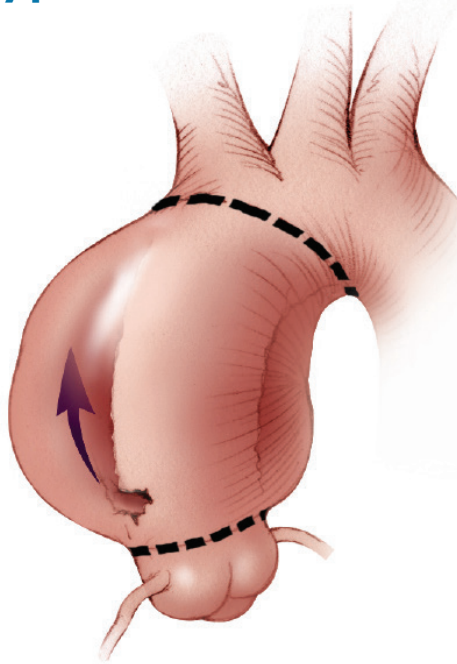


- Cover the coronary buttons with moist gauze prior to the application of BioGlue
- Prime the applicator tip and apply a thin layer of BioGlue to a dry, depressurized vessel
- Apply slight tension to the graft during BioGlue application to mimic the position of the graft once systemic flow has been re-established
- Do not allow excess BioGlue to pool around the base of the valve
- Always allow 2 minutes for the full polymerization of BioGlue before manipulating the anastomosis

individual patients, available resources, and limitations unique to an institution or type of practice.

BioGlue has been used in over 2.5 million procedures

## Type A Aortic Dissection<sup>1,2</sup>



### Distal Repair

- Insert gauze into the true lumen to re-approximate layers of the aorta
- Obliterate false lumen by applying 2 mm thick and 2 cm deep layer of BioGlue
- Use caution to avoid over-filling the false lumen
- After 2 minutes inspect lumen and carefully remove any excess BioGlue

### Proximal Repair

- Cover aortic valve leaflets with moist gauze prior to BioGlue application
- Obliterate false lumen by applying 2 mm thick and 2 cm deep layer of BioGlue
- Use caution to avoid overfilling the false lumen
- After 2 minutes inspect lumen and carefully remove any excess BioGlue
- Repaired aorta can be further reinforced with felt strips if preferred

# BioGlue Syringe Delivery System

Catalog Number	Product	Contains
BG3510-5-G	Syringe 10mL 5-Pack Kit	Five single packs - Each contains one 10mL syringe and syringe plunger, four standard syringe tips, and three 12mm spreader applicator tips
BG3515-5-G	Syringe 5mL 5-Pack Kit	Five single packs - Each contains one 5mL syringe and syringe plunger, and four standard syringe tips
BG3502-5-G	Syringe 2mL 5-Pack Kit	Five single packs - Each contains one 2mL syringe and syringe plunger, and four standard syringe tips
BGAT-SY	Applicator Tip	Ten single packs - Each contains four standard syringe tips
BGAT-10-SY	Syringe Extender Tip - 10cm	Ten single packs - Each contains four 10cm syringe tips
BGAT-27-SY	Syringe Extender Tip - 27cm	Ten single packs - Each contains four 27cm syringe tips
BGST-12	Spreader Applicator Tip - 12mm	Ten single packs - Each contains three 12mm spreader tips
BGST-16	Spreader Applicator Tip - 16mm	Ten single packs- Each contains three 16mm spreader tips
BGDTE-10	Delivery Tip Extension- 10cm	Ten single packs- each pack contains two 10cm delivery tip extensions
BGDTE-27	Delivery Tip Extension - 27cm	Ten single packs - each pack contains two 27cm delivery tip extensions
BGDTE-35	Delivery Tip Extension - 35cm	Ten single packs - each pack contains two 35cm delivery tip extensions

# ARTIVION™

Learn more at [artivion.com](https://www.artivion.com)

\*Internal data on file.

1. Fehrenbacher JW, Siderys H. Use of BioGlue in Aortic Surgery: Proper Application Techniques and Results in 92 Patients. Heart Surg Forum 2006; 9(5):E794-9. 2. Zehr KJ. Use of Bovine Albumin-Glutaraldehyde Glue in Cardiovascular Surgery. Ann Thorac Surg 2007;84:1048-52. 3. BioGlue Surgical Adhesive Instructions for Use.

All products and indications are not available/approved in all markets. All trademarks are owned by Artivion, Inc. or its subsidiaries. On-X Life Technologies, Inc. Jotec GmbH and Ascyrus Medical GmbH are wholly owned subsidiaries of Artivion, Inc. © 2023 Artivion, Inc. All rights reserved.

Artivion, Inc.  
1655 Roberts Blvd., NW, Kennesaw, GA 30144 USA  
Phone: 888-427-9654 | Fax: 770-590-3573 | E-mail: [inquiries@artivion.com](mailto:inquiries@artivion.com)  
For contact information by region, please visit: [www.artivion.com/contact](https://www.artivion.com/contact)

 Artivion, Inc., 1655 Roberts Blvd., NW, Kennesaw, GA 30144 USA

MLENG1624.000 (2023-05)