

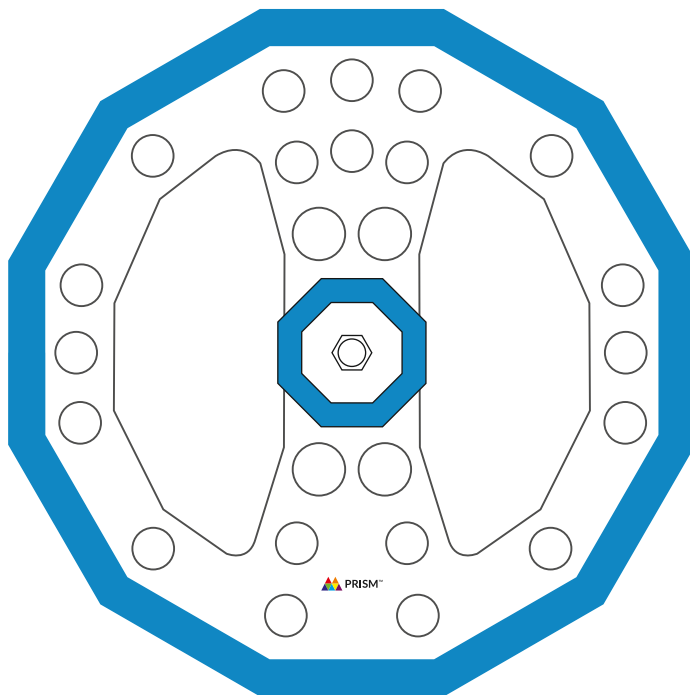
CELESTA
Advanced LED Surgical Light

CELESTA

Advanced LED Surgical Light

Lighting is one of the heavenly gifts for Life and Existence in the entire Cosmos: It is Pure, Eternal, Perfect, Divine, Glorious and Beautiful. Celestial lighting is energy moving freely in the entire cosmos, illuminating objects wherever it reaches

- **Celesta** is a recreated light, intended to facilitate surgeons who have a crusade to save life.
- **Celesta** is a near perfect natural day light. Clean, Clear, comforting and almost blissful.
- It has all the intrinsic characteristics of natural light in every aspect.
- As close to natural light as today's highest known technology can reach.



Articately crafted combining four essential metrics of a surgical luminaire

- **Performance metric** : Precise illumination, with almost 100 CRI and more than 90 GAI.
- **Biological metric** : True colors and vivid nature of illumination combined with narrow and deep cavity focus modes enabling variation for various surgical procedures.
- **Design metric** : Metal body and efficient optics with customization options.
- **Engineering metric** : 100% failsafe mechanism (Triple redundancy for failsafe nature)



Focus adjustments for desired clinical application



Standard Focus Mode

Precise focus with a D50 of 150, and a D10 of 250. Can be used for the majority of surgical procedures.



Narrow Focus Mode

Special sharp focus mode with a D50 of 120 and a D10 of 200. Recommended for smaller operating cavity such as neuro or pediatric procedures.



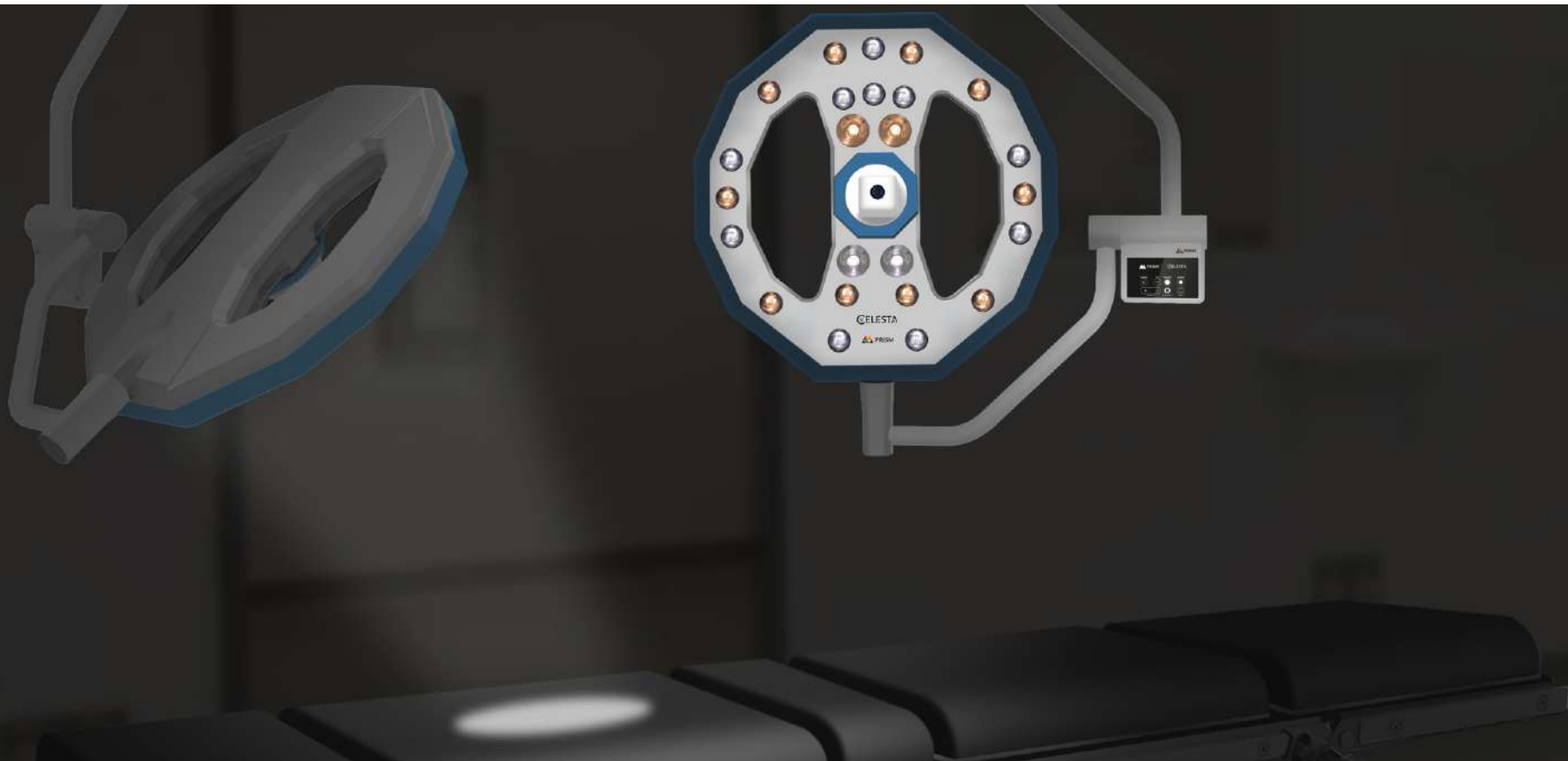
Deep Cavity Focus Mode

Special focus mode designed to provide enhanced illumination in deep cavity procedures. Specially recommended for cardiac procedures.



Endo Focus Mode

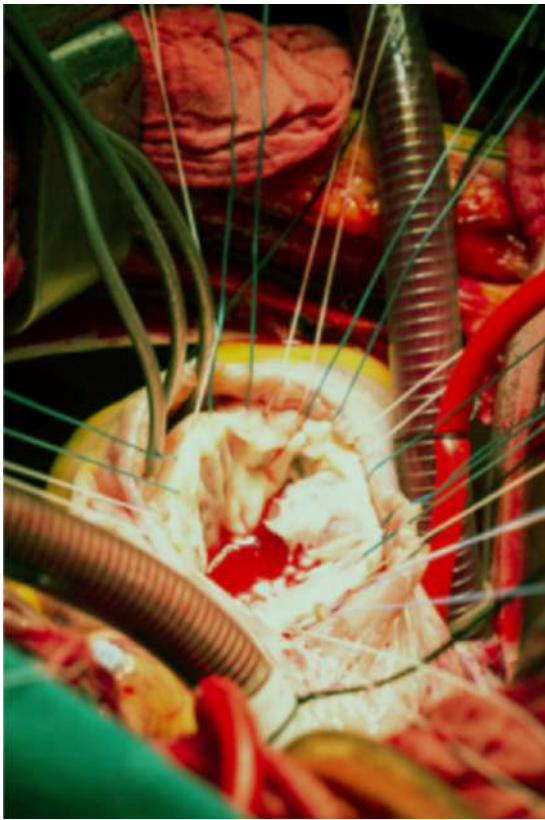
Triple endo mode, warm, natural and cool to provide perfect ambient lighting for endoscopic procedures



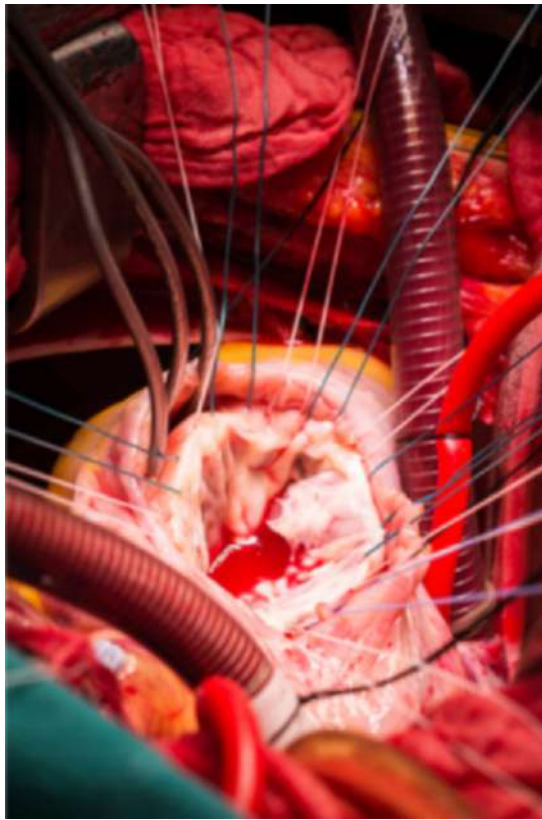
Truly Natural and Vivid Lighting

The surgical cavity illuminated by the OT light is a multilayered, multicolored illumination site with organs and tissue that are very close to one another. It is very important for the surgeon to look at the true colors of various tissues to be able to do accurate clinical diagnosis and comfortably differentiate one tissue and organ from the other. Thus both true color rendering and vividness, both are very important for the operating surgeon. Celesta series of surgical light is the first surgical light

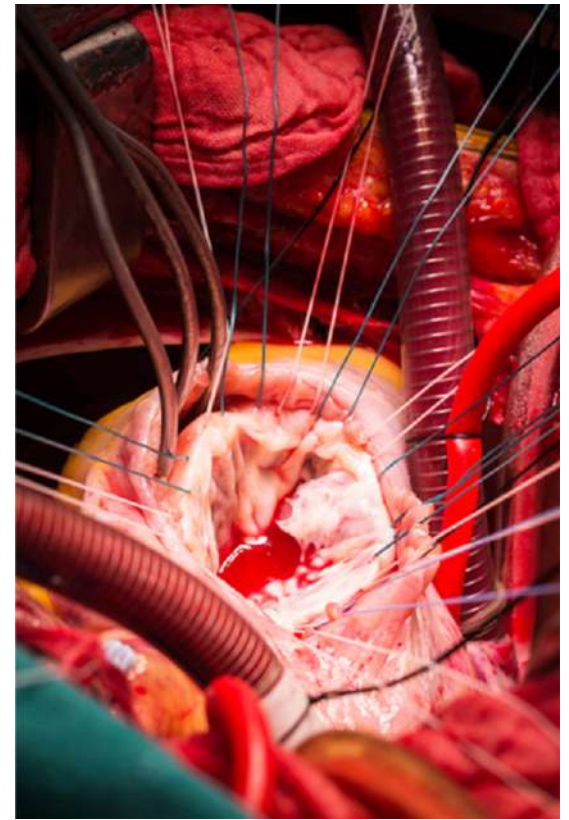
to deliver over 98 CRI with a combination of over 92 GAI, thus a truly natural and vivid light. Just as CRI (Color Rendering Index) is a measure of the light source's capacity to bring out the natural colors of the object, GAI (Gamut Area Index) is the measure of the ability of the light source to differentiate one object from the other. Prism is the first brand globally to actively promote GAI as an important performance parameter of a surgical light. (can mention as a separate note



90 CRI - 80 GAI



98 CRI - 80 GAI



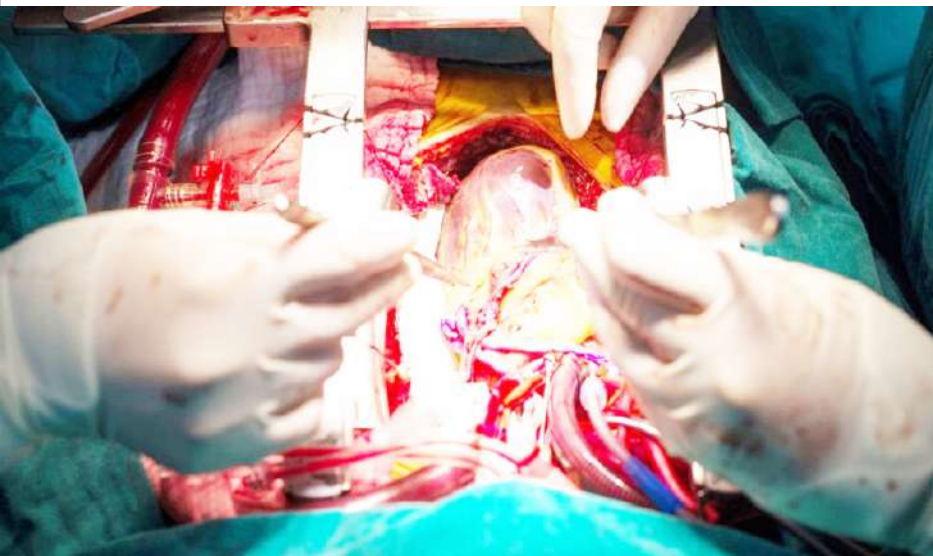
98 CRI - 92 GAI

Precise Lighting: Quality over quantity

Celesta series of surgical lights is carefully designed to deliver high quality of light precisely at the surgical cavity, where illumination is necessary. By contrast many other manufacturers focus only bright light, which can sometimes cause an undesired outcome of glare. By definition glare is the excess light around the desired light that reflects off of undesired objects back into the surgeon's eyesight causing unnecessary strain

and eye fatigue. The illustration of a person reading the book is a clear example of how a poorly designed light can serve the required application, but in an inefficient way and cause unwanted outcome of glare, causing discomfort to the user. On the other hand a properly designed light, can illuminate the required site with precise lighting, even in smaller amounts of overall light. Thus more is not always better.

Glare is nothing but the wasted light, That reflects back into the surgeon's eyesight off objects other than operating cavity



Bright Light

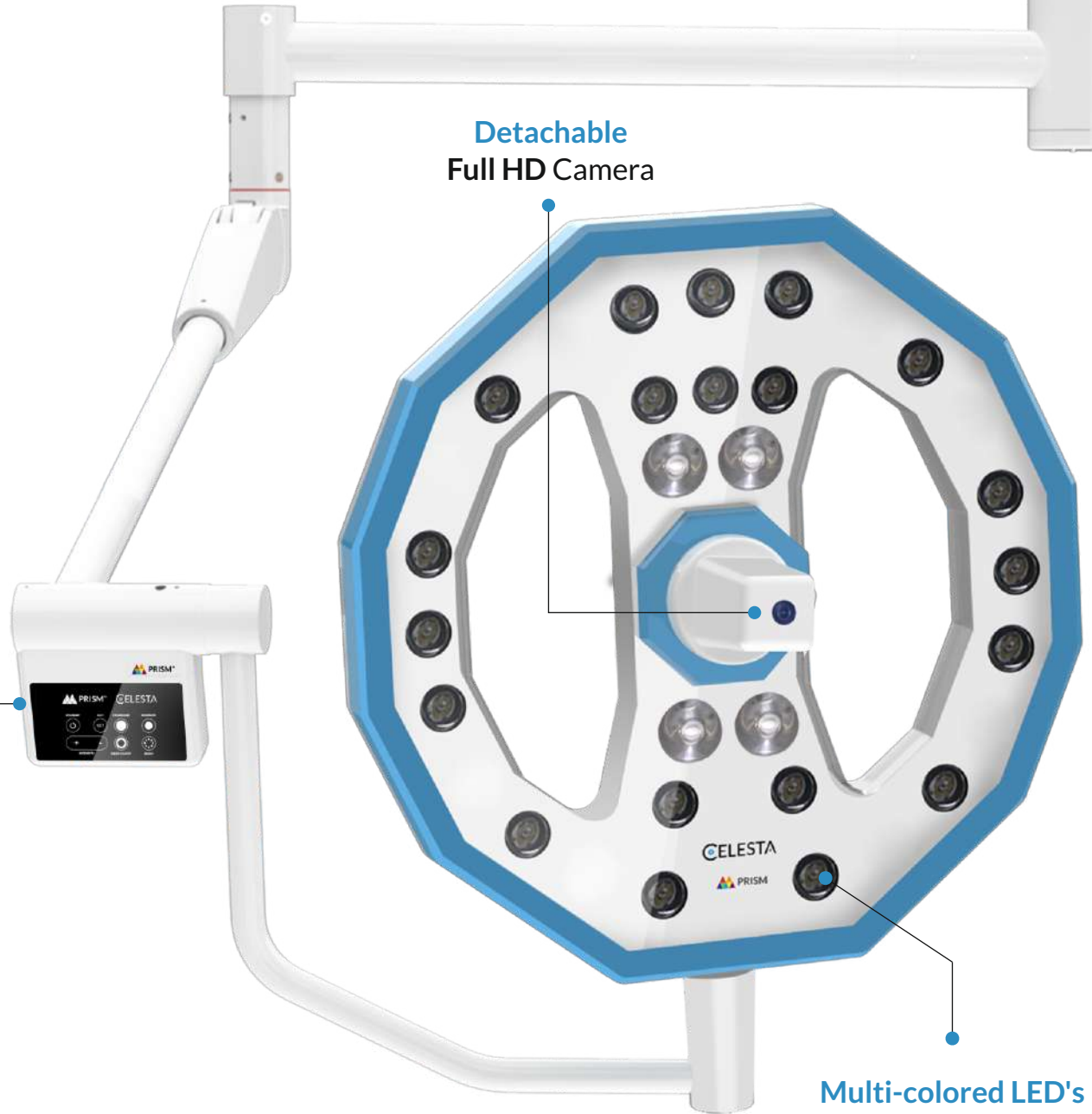


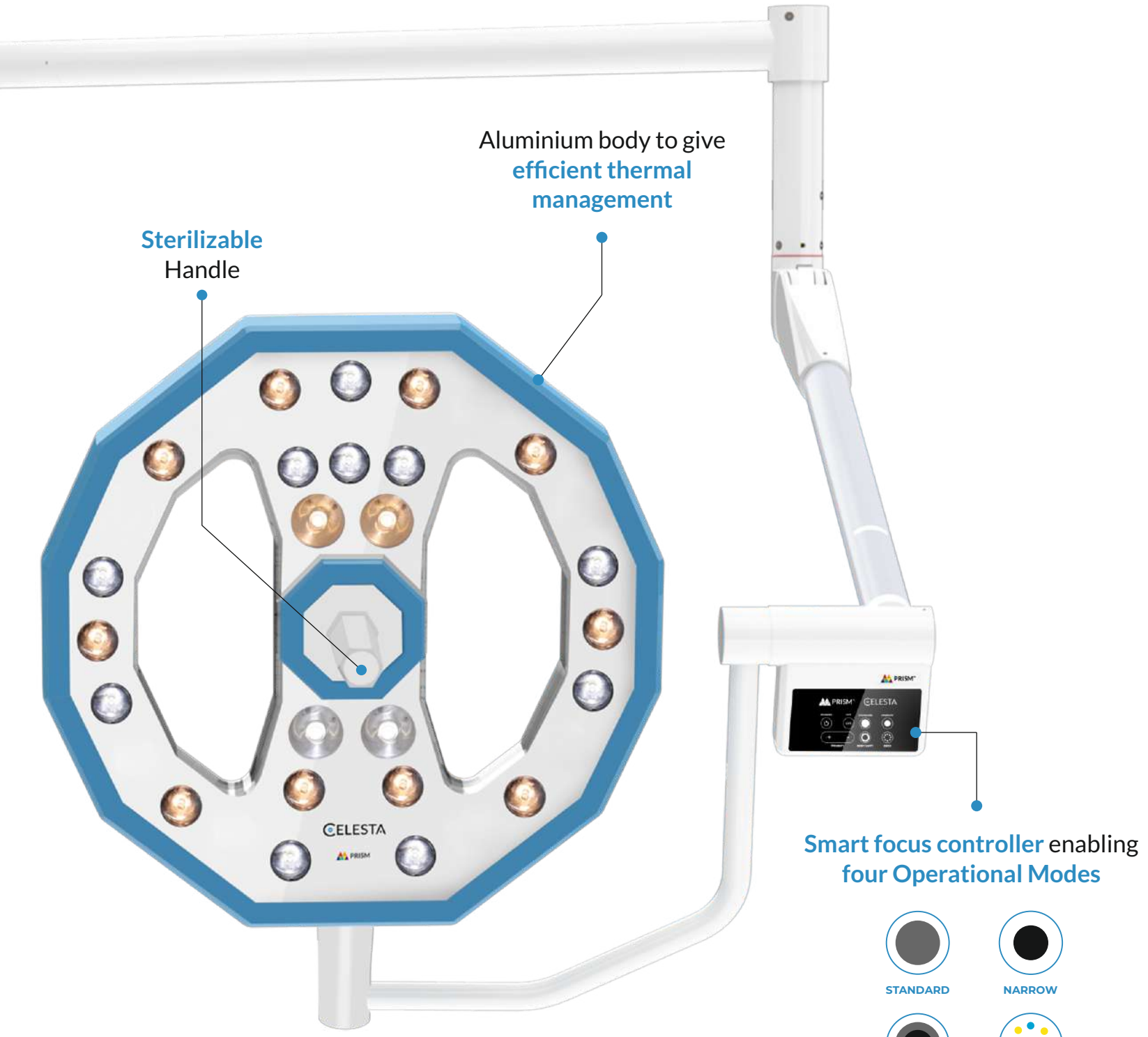
Precise Light

Ergonomic design
for better grip

Detachable
Full HD Camera

Multi-colored LED's
to provide **three color
temperature modes**
(3,700 / 4,350 / 5,500 k)





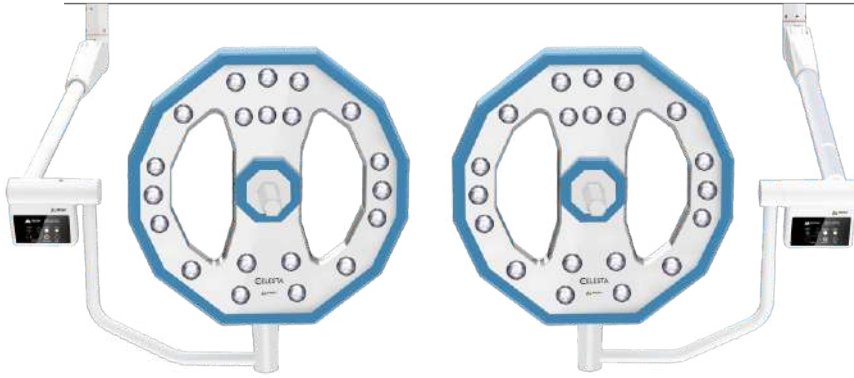
Aluminium body to give efficient thermal management

Sterilizable Handle

Smart focus controller enabling four Operational Modes

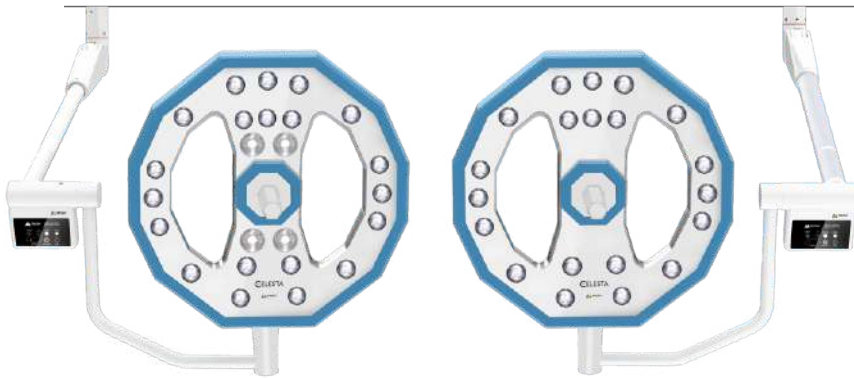
- STANDARD
- NARROW
- DEEP CAVITY
- ENDO

CELESTA 303



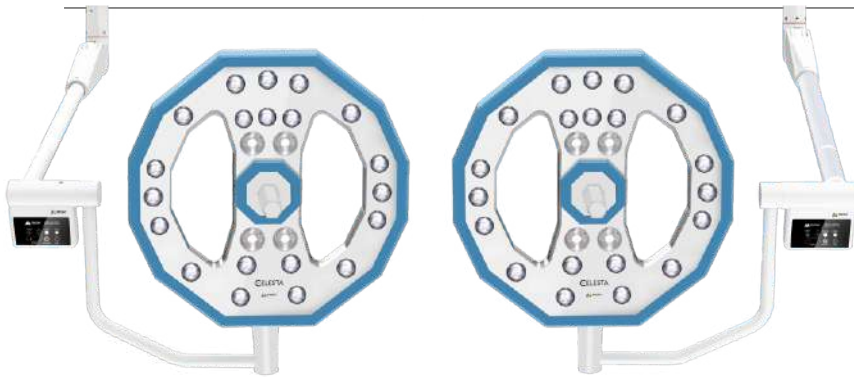
Technical Specification	Principal Dome	Satellite Dome
Intensity (lux)	1,30,000	1,30,000
CCT	4,350K	4,350K
CRI	95	95
No. of LED	20	20
Light Field Diameter	250 mm	250 mm
Life of LED	50,000 hours	50,000 hours
Depth of Illumination	1100 mm	1100 mm

CELESTA 603



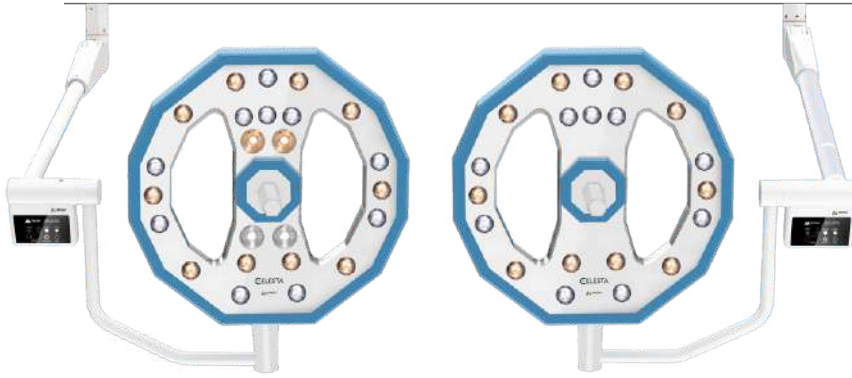
Technical Specification	Principal Dome	Satellite Dome
Intensity (lux)	1,60,000	1,30,000
CCT	4,350K	4,350K
CRI	95	95
No. of LED	24	20
Light Field Diameter	150 mm - 250 mm	250 mm
Life of LED	50,000 hours	50,000 hours
Depth of Illumination	1200 mm	1200 mm

CELESTA 606



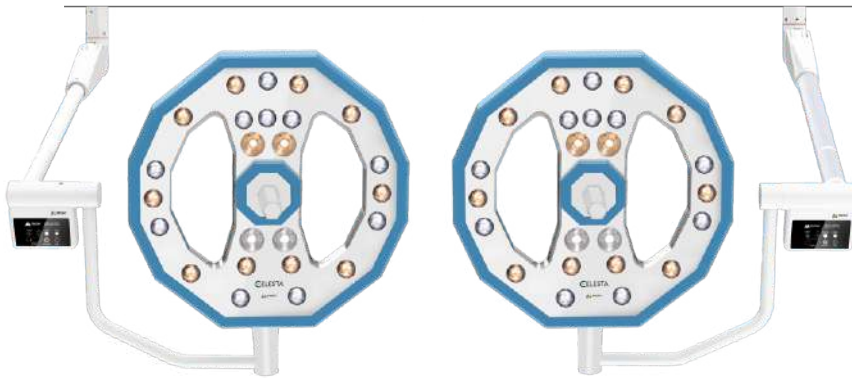
Technical Specification	Principal Dome	Satellite Dome
Intensity (lux)	1,60,000	1,60,000
CCT	4,350K	4,350K
CRI	95	95
No. of LED	24	24
Light Field Diameter	150 mm - 250 mm	150 - 250 mm
Life of LED	50,000 hours	50,000 hours
Depth of Illumination	1200 mm	1200 mm

CELESTA 613



Technical Specification	Principal Dome	Satellite Dome
Intensity (lux)	1,60,000	1,30,000
CCT	3700K-4350K-5700K	3700K-4350K-5700K
CRI	95	95
No. of LED	24	20
Light Field Diameter	150 mm - 250 mm	250 mm
Life of LED	50,000 hours	50,000 hours
Depth of Illumination	1200 mm	1200 mm

CELESTA 616

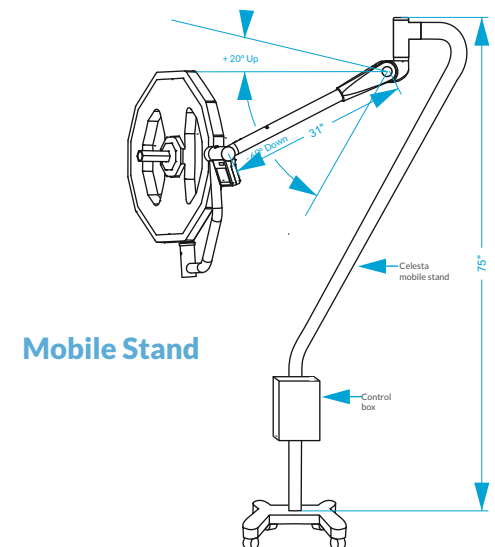


Technical Specification	Principal Dome	Satellite Dome
Intensity (lux)	1,60,000	1,60,000
CCT	3700K-4350K-5700K	3700K-4350K-5700K
CRI	95	95
No. of LED	24	24
Light Field Diameter	150 mm - 250 mm	150 mm - 250 mm
Life of LED	50,000 hours	50,000 hours
Depth of Illumination	1200 mm	1200 mm

Hawk Eye vision Full HD Camera & Monitor Carrier Arm Optional Accessories



Camera Specifications	
Resolution	1080p at 60 FPS (Full HD)
Megapixel	4 MP
Focus	Auto focus with focus lock
Zoom	10x optical with 16x digital zoom on top
White Balance	Automatic with one push option
Monitor carrier arm	Upto 7 kg monitor weight



CELESTA

Advanced LED Surgical Light

A Product By



Communicate to: Admin, Office & Factory

Eclipse Prism Medical Devices Pvt. Ltd.

211-213, Ashok Service Ind. Estate, Gokul Nagar,
L. B. S. Marg, Thane West, Mumbai 400 601,
Maharashtra, INDIA

Tel : 022 2172 0091

Email : info@epmdgroup.com

www.epmdgroup.com

For More Info On Sales Contact



Matrix Medicals Pvt. Ltd.

B-2/1, 8th Floor, Ashar IT Park, Wagle Estate,
Rd. No.16, Thane (W) 400 604, India

Tel : 022 2081 3711 | +91 73044 11454

+91 73045 45603

Email : info@matrixmedicals.in

www.matrixmedicals.in