



STILLE imagiQ2

Setting new low-dose standards in the OR



Surgical perfection. For life.

Endovascular repair meets surgical perfection

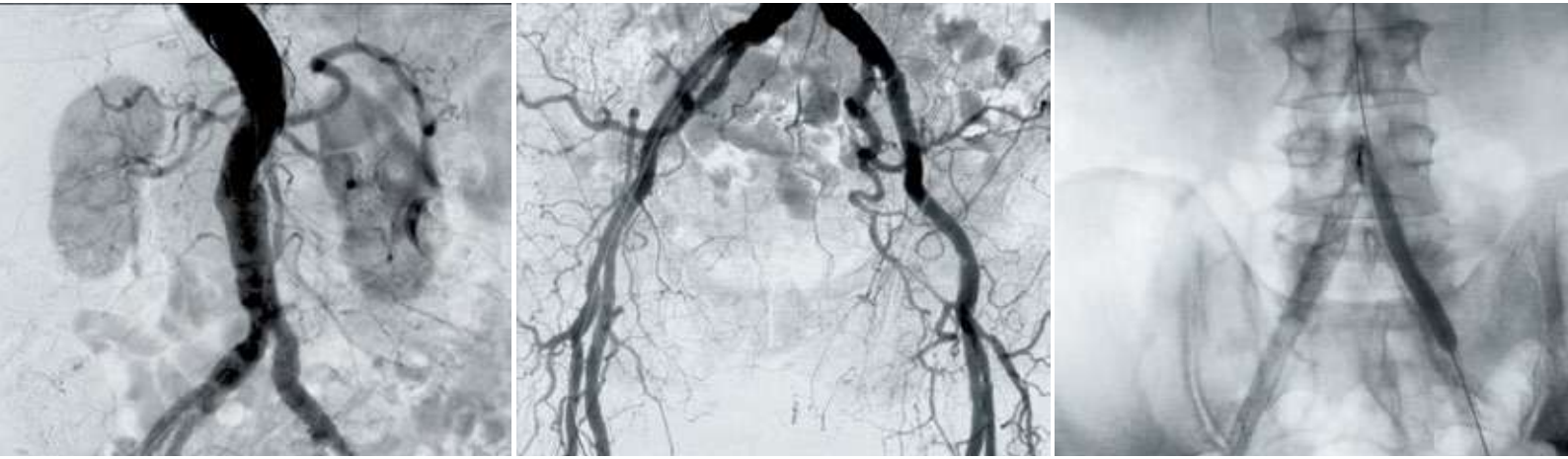


The STILLE imagiQ2: A new generation of low-dose surgical tables

Our table is designed with perfection for image-guided endovascular procedures. With pricing, safety and features optimized for both in-patient and outpatient settings, the imagiQ2 surgical table is enhancing mobile Hybrid OR procedures and conventional endovascular repair.

Learn more at:
www.stille.se/imagiQ2

Envision a *clearly* different C-arm experience



The STILLE imagiQ2 provides ultimate visualization and OR efficiency

Improve procedure time

The STILLE imagiQ2 has faster, smoother, more accurate movements and crystal-clear translucency. These features help save time in the OR and minimize the need for C-arm adjustments that could contribute to overheating.

The ultra-slim design and super-low base make it an ideal complement for any size C-arm.

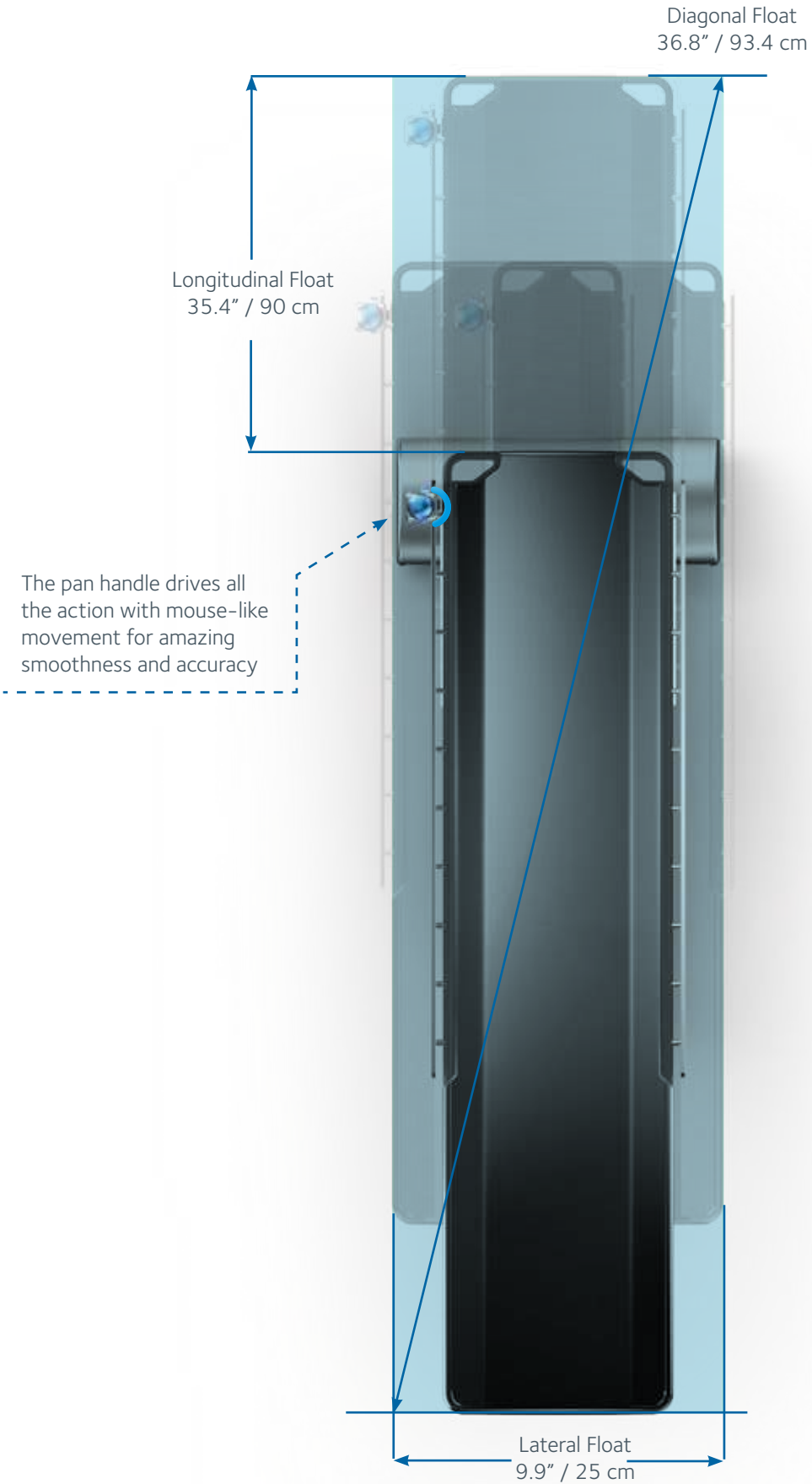
Choose a low-dose enabler

The high-performance carbon fiber table top provides unbeatable transparency (0.4 mm Al), considerably reducing the radiation dose from the C-arm without compromising image quality.





Experience True Free Float[®]



Total control and freedom of movement



More than a pan handle, it's an extension of you

The cardiovascular system is not designed to operate on straight lines, neither should your vascular table.

The True Free Float® technology* of the STILLE imagiQ2 gives you unprecedented control and freedom of movement in any desired direction while providing state-of-the-art smoothness, allowing shorter procedure times and efficiency in the OR.

STILLE has been developing medical devices since 1841 and has always been committed to providing the safest and highest performing solutions that will live up to our motto: *Surgical perfection. For life.*

*Patents pending.

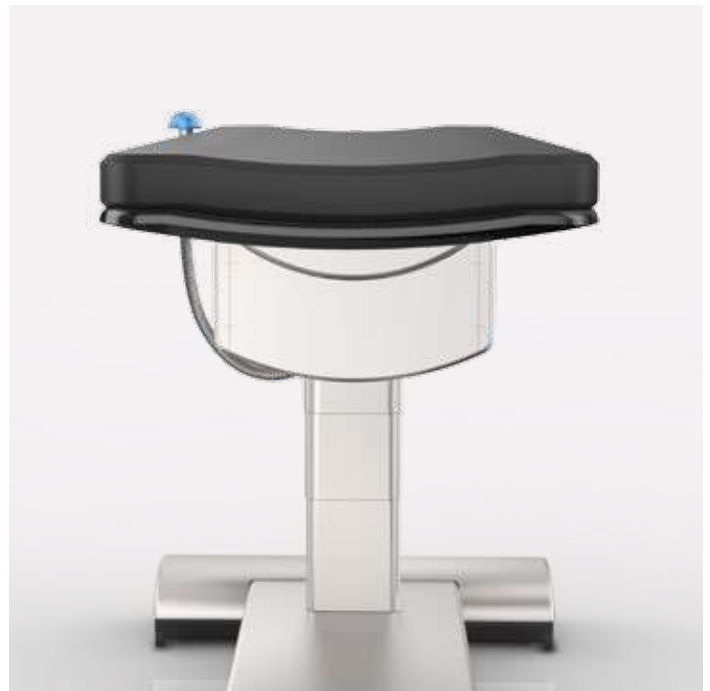
Roll with it

The patented technology of the iso-roll ($\pm 15^\circ$) maintains image focus during patient repositioning, helping minimize C-arm adjustments thus reducing scattered radiation.



Set the trend

You have the ability to Trendelenburg / reverse trend 25° — that's the most for any vascular OR table on the market. The quick-action button allows for rapid descent for emergency situations.



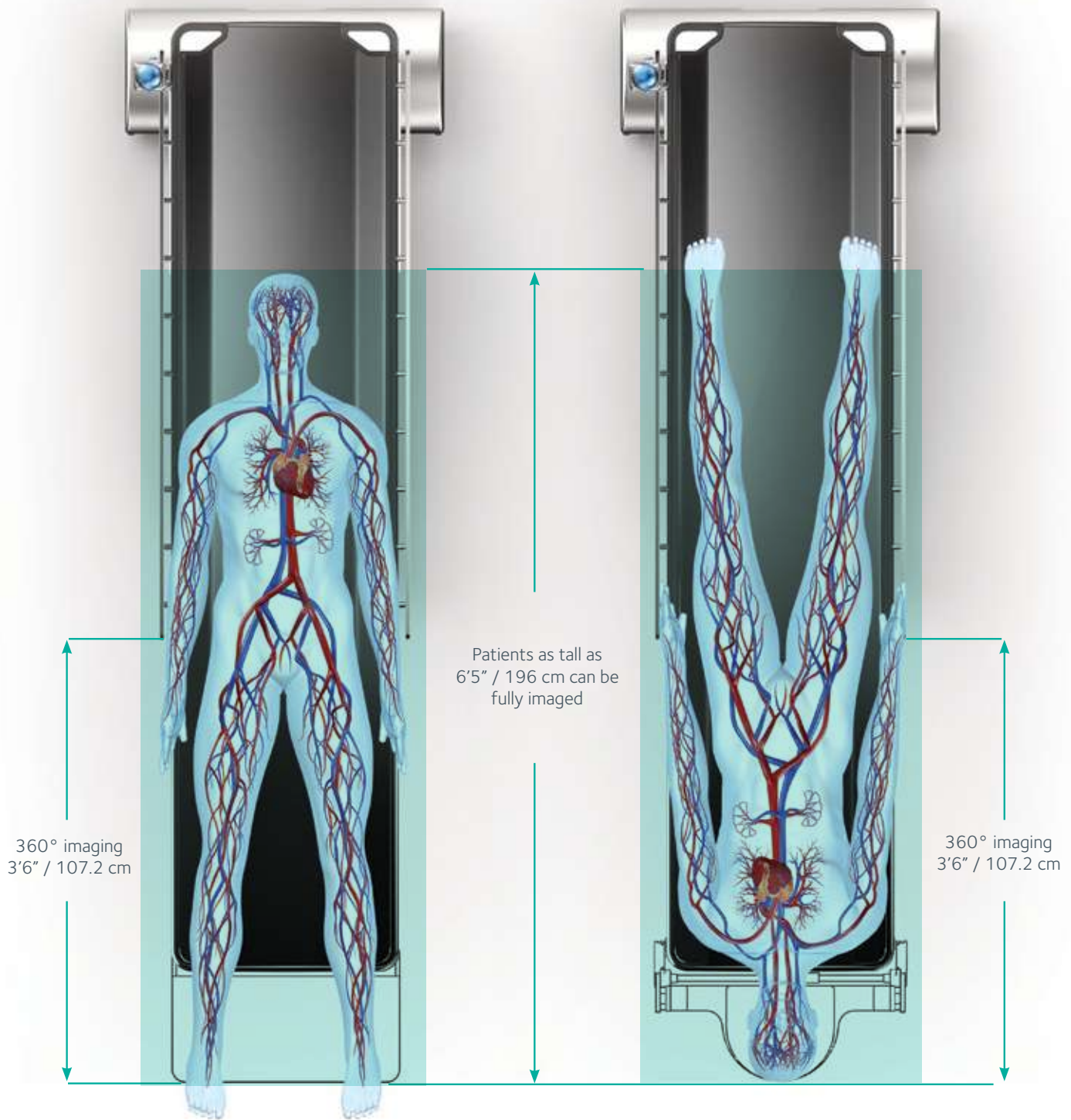
Freedom of float

Free float technology allows smooth longitudinal (35.4" / 90 cm), lateral (9.9" / 25 cm) and diagonal (36.8" / 93.5 cm) movement.

Flexibility for the future

The exchangeable table top gives you the option of expanding your OR capabilities and is readily available for future upgrades.

Premium capabilities for premium procedures



Go the distance

- ✓ Total translucent length: 6'5" / 196 cm with headrest (5'6" / 169.2 cm without headrest)
- ✓ 360° unobstructed translucent length: 3'6" / 107.2 cm with headrest (2'7" / 80.4 cm without headrest)

Weigh in on an affordable investment

- ✓ Because it is a premium-made product, the imagiQ2 tables can be upgraded to handle patients as heavy as 661 lbs (300 kg)
- ✓ Standard configuration can handle patients weighing as much as 496 lbs (225 kg)



Provide the safest environment
for your patients and OR staff

Low-dose tables: The standard of safety

Our engineers designed the imagiQ2 table top with a new high-performance carbon fiber structure material.* This high-quality table top with its unbeatable translucency (0.4 mm Al), allows the c-arm to enhance image quality while reducing x-ray dose, improving OR safety.

According to the recent Guidelines of Patient Radiation Dose Management,¹ equipment shall be operated at the lowest fluoroscopic dose rate that yields adequate images.

*Patents pending.

1. Stacker M, Balter S, Towbin RB, et al. *Guidelines for Patient Radiation Dose Management*. 2009;20:S263-S273.

Surgical perfection for life: *A worthy investment*



Gold-standard service and warranty

STILLE is dedicated to providing gold-standard customer service. We believe in our products: imagiQ2 is backed with a 2-year warranty on labor and 3 years on parts. However, if you need service support, our technicians are specially trained on each product and offer quick, courteous service.

Safety for patients and staff

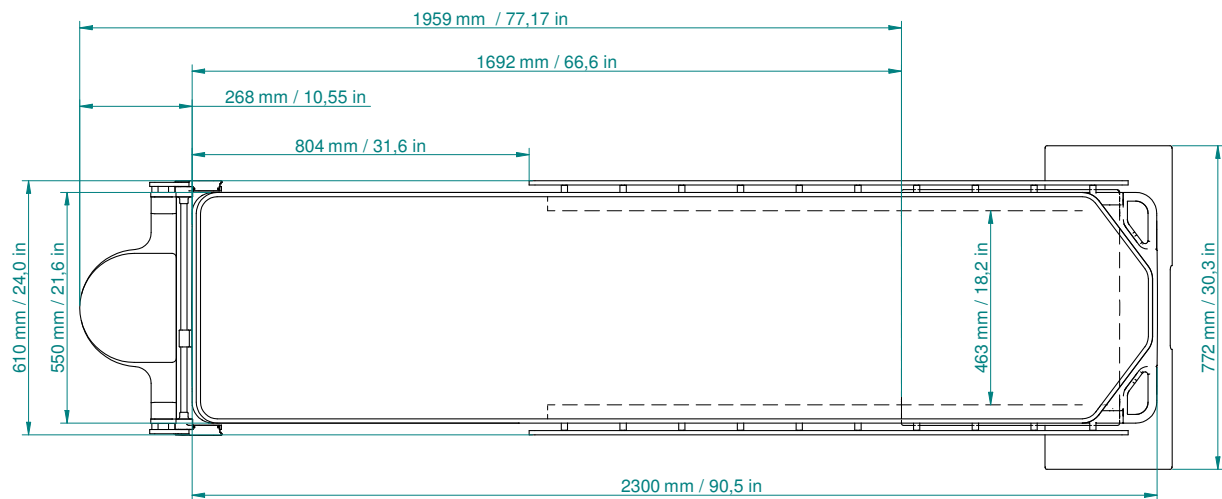
For more than 170 years, STILLE has developed medical devices with patient safety as our primary focus. Our products require extensive safety checks through our quality system to ensure they are delivered with the highest level of safety for patients and OR staff.

Reliability you can trust

STILLE has a history of leadership in the medical sciences that started in 1841 at the Karolinska Institute in Sweden. We pride ourselves in working with the finest material to ensure the highest quality in performance and durability on all our products.

Innovative technology

STILLE is an innovator in vascular imaging technology. We have always invested in product development by working directly with surgeons to provide the best solutions to OR situations. We focus our attention on the product's safety and ease of use so you can focus on the procedure not the equipment.



Product specifications of the STILLE imagiQ2

Feature	Description
Patient weight	496 lb / 225 kg and 661 lb / 300 kg (with load upgrade pack)
Table top length	90.5" / 230 cm
Translucent length	77.17" / 196 cm with headrest (66.6" / 169.2 cm without headrest)
Translucent table top	Proprietary, patent pending carbon fiber structure. Al 0.4
Float lock	Stille quick-lock system
Float (longitudinal, lateral, diagonal)	35.4" x 9.9" x 36.8" / 90 cm x 25 cm x 93.4 cm
Operation conditions	100% continuous
AC power: 100-250 Volts	Direct AC power + battery DC power
Length, width, height	L = 92" / 234 cm; W = 30.3" / 77.2 cm; H = 28"- 43" / 71-109 cm
Trendelenburg	±25°
Lateral roll (iso-roll)	±15°
Wheels and steering	4 swiveling wheels
Side rails	Fixed along 2/3 of the table top
Exchangeable table top	Yes, future-proof platform for extended use
Transport handle	Yes (Color: Black for 225-kg version, silver for 300-kg version)

Customizing the imagiQ2 to fit your needs

Upgrade features	Description
Mobility enhancement pack	When the table is used for frequent intra-clinic transportation, use the mobility enhancement pack for improved mobility. An additional fifth guiding wheel is included to provide optimal mobility. Ref: 535-1711
Load upgrade pack	Maximize the capabilities of the imagiQ2 with increased patient weight capacity up to 661 lb / 300 kg. Ref: 535-1710
Performance pack	For maximum uptime, choose the performance pack. It includes a high-performance long-term battery pack with up to 1 week of durability. Ref: 535-1712

Selective accessory highlights



imagiQ2 radiation shield
Tailored and easy to fit protection against scattered radiation with lead rubber (0.5 Pb) material.



Detachable short side rail
Short 8 in / 20 cm rail system enabling accessory mounting and 360° imaging capabilities.



Translucent fistula arm board
Provides an unobstructed image and is connected directly to the carbon fiber top.



Adjustable procedure headrest
Fully translucent headrest ensures easy intubation and superior carotid visualization. It fits on the free end of the table top and requires side rails to be mounted.

Accessory	Part number	Standard	Option	Market availability	
Pan handle DIN	535-1760	x		All excl US	
Pan handle US	535-1761	x		US only	
Detachable side rail US	535-1720		x	All	
Detachable side rail DIN	535-1721		x	All	
Detachable side rail UK	535-1722		x	All	
Short detachable 8 inch rail US*	535-1724		x	All	
Short detachable 8 inch rail DIN*	535-1725		x	All	
Short detachable 8 inch rail UK*	535-1726		x	All	
Fistula arm board	535-1730		x	All	
Head rest, adjustable	535-1740		x	All	
Head rest fixed	535-1741		x	All	
Catheter tray 1000 mm	535-1750		x	All	
Catheter tray 1500 mm	535-1751		x	All	
Catheter tray 500 mm	535-1752		x	All	
Foot Control	535-1762		x	All	
Adjustable armboard DIN	514-50-3SR025		x	All excl US	
IV pole	514-100401		x	All excl US	
Anesthesia frame	514-100311		x	All excl US	
Basic armboard	512-5000		x	US only	
Anesthesia screen	512-5030		x	US only	
IV pole w/o clamp	512-5010		x	US only	
IV pole clamp	512-5013		x	US only	
Foot board carbon fiber with pad	512-5040		x	US only	
Deluxe maximum restraint	O-RSX2		x	US only	
Radiation shield base kit grey**	535-1770	535-1770-US	x	EU only	US only
Radiation shield base kit blue**	535-1771	535-1771-US	x	EU only	US only
Radiation shield loop grey. Extra shield**	535-1772	535-1772-US	x	EU only	US only
Radiation shield loop blue. Extra shield**	535-1773	535-1773-US	x	EU only	US only

* The new detachable 20 cm / 8 in side rail is not to be used with a retractor system, catheter trays 1000 mm and 1500 mm

**The system is designed to fit the imagiQ2 and consists of 1 mounting piece that is placed under the mattress and 3 radiation shield curtains. Extra shield curtains, which also can be fitted to the side rail if customer only requires a single curtain and not full whole system



| STILLE imagiQ2 |

STILLE – Surgical perfection. For life.

STILLE is one of the oldest medical device companies in the world. At STILLE, we develop, produce and sell high-quality surgical instruments and surgical imaging tables to physicians worldwide, and has done so for 170 years.

STILLE's offering consists of a strong brand and products renowned for their superior quality. We manage our business in two distinct business areas—Surgical Instruments and Surgical imaging tables.

Surgical instruments

In our Surgical Instruments business area, we have a complete offering of handcrafted, forged instrumentation for all fields of open surgery, with a special emphasis on cardiovascular surgery, and reconstructive and aesthetic plastic surgery.

Our instruments feature delicate design, industry-leading durability and a unique feel, which has made STILLE a well-known and highly respected supplier by surgeons throughout the world.

Surgical imaging tables

In our Surgical imaging tables business area, we offer specialty tables for minimally invasive procedures, with pricing, safety and features optimized for both in- and outpatient settings. The STILLE imagiQ2 surgical imaging table with its low-dose capabilities, is optimized for advanced mobile Hybrid OR settings as well as peripheral and interventional procedures.

Learn more at www.stille.se



Surgical perfection. For life.

STILLE AB

Gustav III:s Boulevard 42
SE-169 73 Solna, Sweden
Phone: +46 8 588 580 00
Fax: +46 8 588 580 05
info@stille.se

www.stille.se

STILLE Surgical Inc.

943 Parkview Blvd
Lombard, IL 60148
United States
Phone: 1.800.6651614

Distributed by: